

SHEET NO 1

PLAN NO 1819

WALL AVENUE SEWER

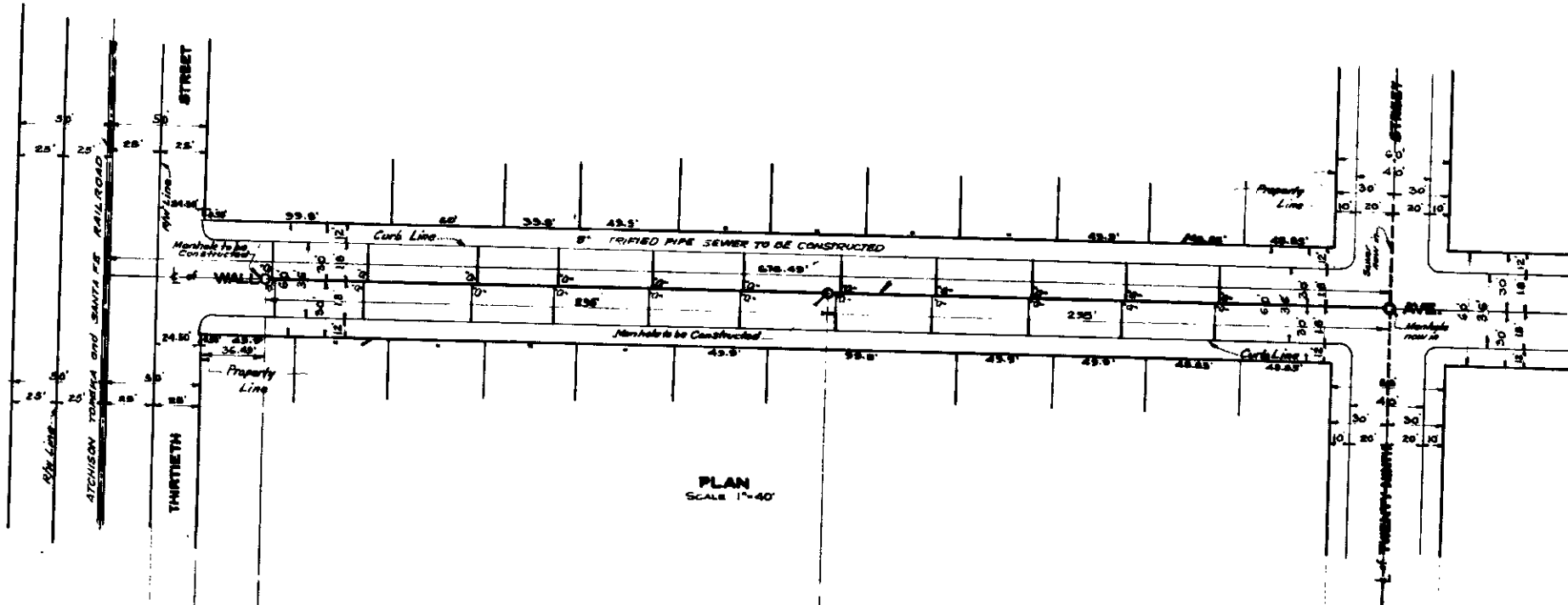
BETWEEN
TWENTY-NINTH STREET AND THIRTIETH STREET
IN THE
CITY OF SAN BERNARDINO
CALIFORNIA

DECEMBER 1948.

R.D. FORSYTHE,
ACTING CITY ENGINEER.

PLAN ADOPTED March 7, 1949.

FILED
RECORDED
ACTING CITY ENGINEER



PLAN
SCALE 1"=40'

NOTE:
All Vitrified Pipe Connecting Sewers shall be constructed on an upward grade of two per cent from the Main Sewer's end shaft extend from the Main Sewer to the Curb Line.

PROFILE LEGEND
Approximate Present Surface of Ground shown by Black Line Mass.
Flow Line of Sewer to be constructed shown by Red Line Mass.

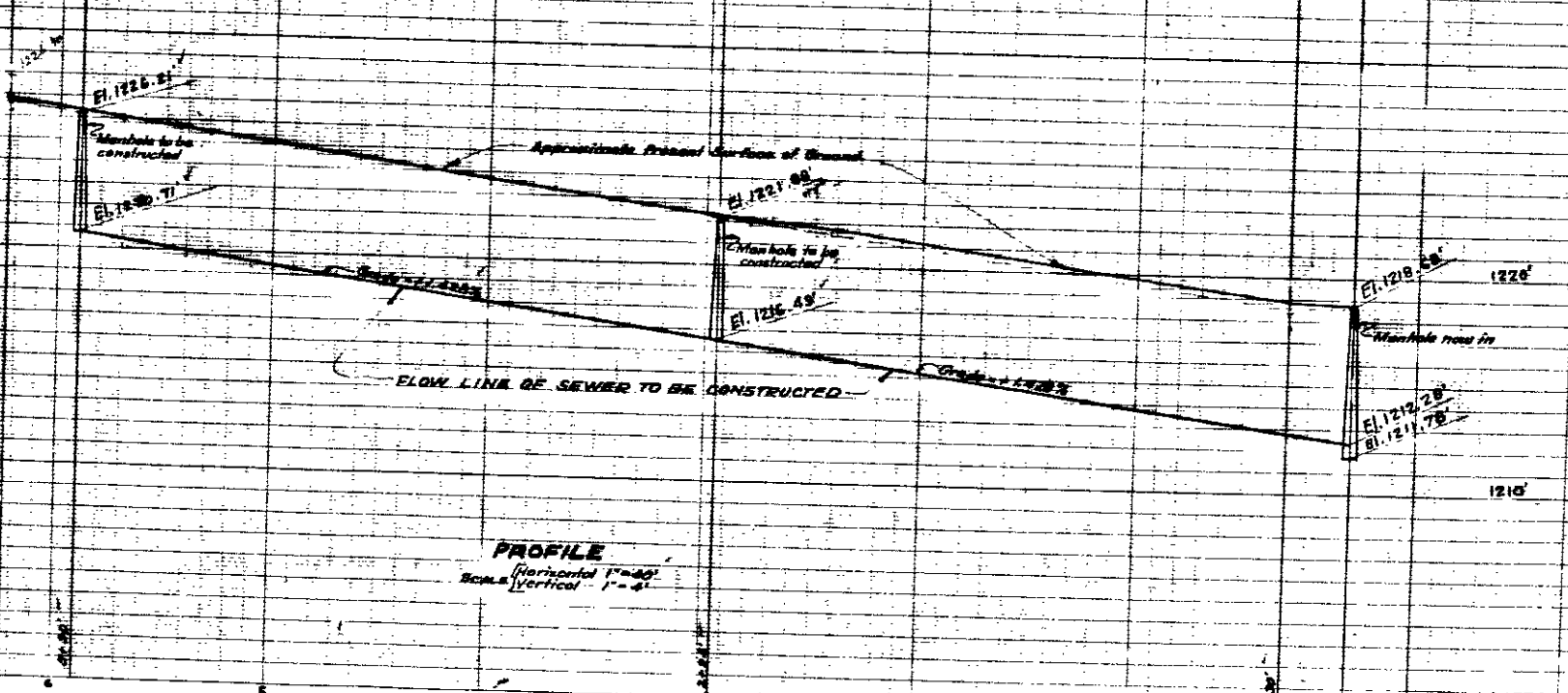
LEGEND
 2'-6" means manhole poles. E. means Curb Line.
 2'-0" means gutter feet. S. means Street.
 N. means Number. A. means Avenue.
 E. means Elevation.
 8" Vitrified Pipe Sewer to be constructed shown thus
 6" Vitrified Pipe Sewer to be constructed shown thus
 5" Vitrified Pipe Sewer to be constructed shown thus
 Manhole to be constructed shown thus
 Manhole now in shown thus
 8" Vitrified Pipe Sewer now in shown thus

SEWER DETAIL
 Line of 8" Vitrified Pipe Sewer to be constructed
 Line of 6" Vitrified Pipe Sewer to be constructed
 4" Vitrified Pipe Sewer with 4" connecting Sewer to be constructed
 No. of Manholes to be constructed

TITLE TO STREETS
 WALL STREET was dedicated by Independence Springs Tract No. 1871 recorded in Book 27 of Maps, of pages 8 & 9, records of San Bernardino County, California.
 WALL STREET was changed to WALL AVENUE by Resolution No. 163 of the City of San Bernardino, adopted November 3, 1936.

GRADE ORDINANCE
 Grade of WALL AVENUE was established by Resolution No. 1664, of the City of San Bernardino, California.

DATUM
 All Elevations shown in feet and in feet and inches above a plane which is 100.28 feet below the City Bench Mark as established by Ordinance No. 383 of the City of San Bernardino, California.



PROFILE
(Horizontal 1"=40')
Scale (Vertical 1"=5')